



Lary®

INDUSTRIAL TECHNOLOGY

POSITIVE EXPERIENCES



TECHNOLOGY



SKETCHING



3D MODELLING



PRODUCTIVE TOOLS



GRADING



PRESENTATIONS

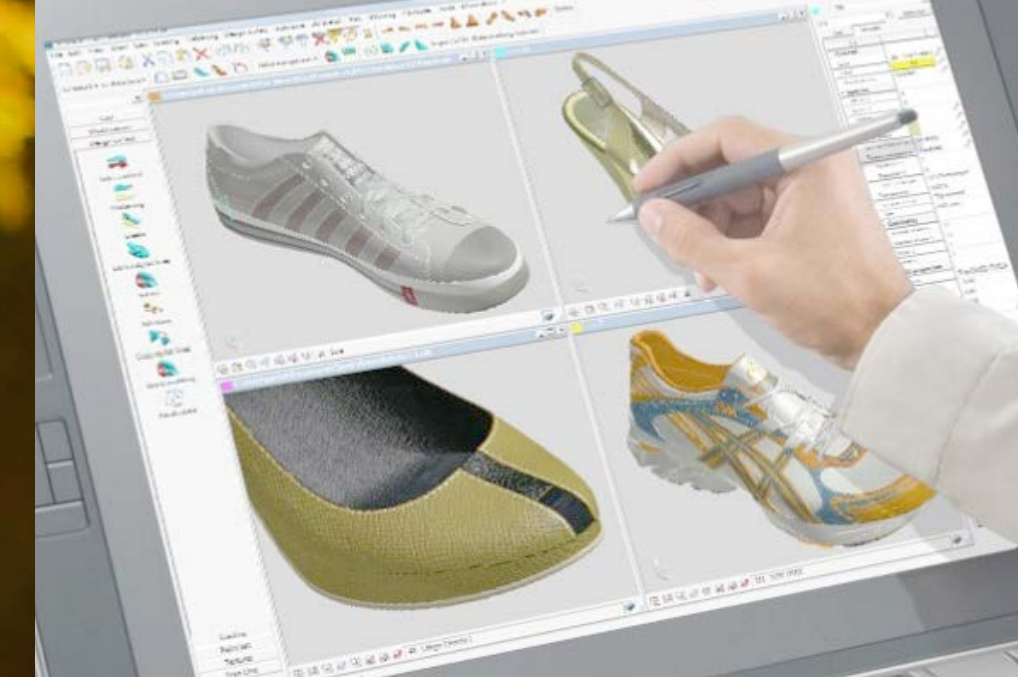


ADVANTAGES



UMA EMPRESA QUE
DESENVOLVE MAIS DO
QUE FERRAMENTAS
DE ALTA PRECISÃO
PARA A LIBERDADE DE
SUAS CRIAÇÕES.

DESENVOLVE EX-
PERIÊNCIAS POSITIVAS.



REDUCE THE TIME OF YOUR
PRODUCT DEVELOPMENT!

- ▶ SHOE DESIGN TOOLS ARE THE MOST INTUITIVE AND ADVANCED PRODUCTS ON THE MARKET FOR DIGITAL SHOES DESIGN BASED ON A PARAMETRIC NURBS, SOLID AND SURFACE MODELING, THIS ALLOWS CREATION OF HIGH QUALITY GEOMETRY FOR RAPID PROTOTYPING AND FINAL PRODUCT PRODUCTION.
- ▶ FROM DRAFT TO PRODUCTION, THIS IS A UNIQUE PRODUCT BUNDLE THAT CAN HANDLE THE ENTIRE PROJECT IN SINGLE SOFTWARE. WITHIN A SINGLE PRODUCT, YOU CAN COMBINE THE TOOLS TO DESIGN THE SHOE LAST, UPPERS, SOLES, ACCESSORIES AND THE MOULD.
- ▶ TR-SHOE IS COMPLETE HIGH END SOLUTION, ABLE TO DESIGN, PRODUCE AND CREATE REALISTIC 3D IMAGES.



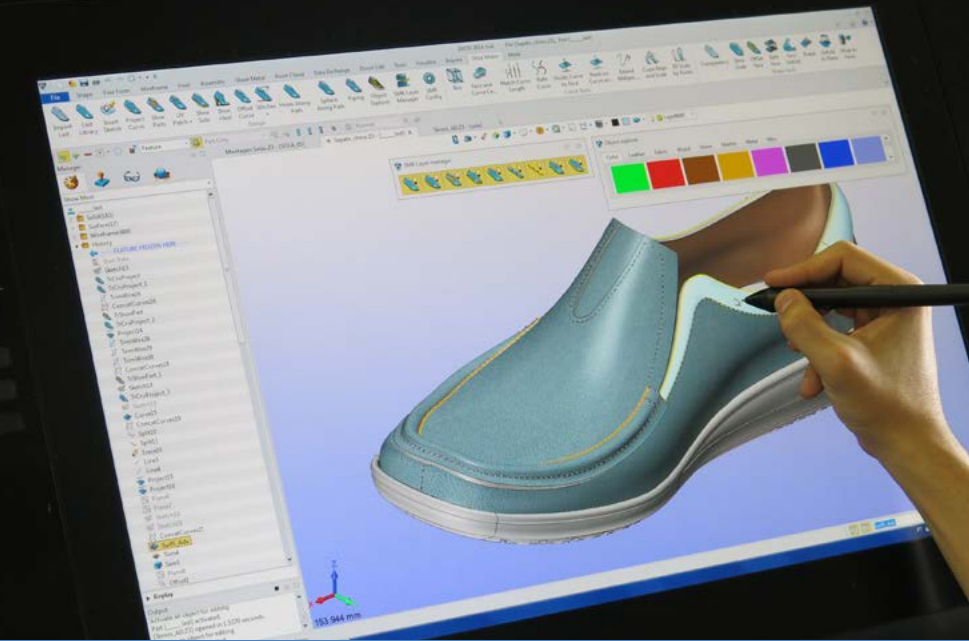
- ▶ The perfect tool to convert your ideas in real products!
- ▶ For a quick design and concept approval, this is the correct tool.
- ▶ Combining the technology of a touch screen and a pen, the designer can naturally sketch on a plan or over the Shoe LAST as done by hand in a paper, but with the advantage of a paint-box tool.
- ▶ Without spend large amount of time, now you can easily give life to your ideas.
- ▶ The designer doesn't need to be CAD expert to design models and also can do it much faster and produce several ideas for product selection.
- ▶ In different environments, it's possible to sketch on the 3D LAST, or on the plan using the unfolded shoe LAST limits.
- ▶ Combining other 3D tools to include accessories or 3D soles from an easy wizard that creates a shoe sole in few clicks, the designer can produce a realistic product in minutes.



ADVANTAGES	Easy to use
	High speed scanning
	High quality scanning
	w and colour scanning
	Custom scanning scripts
APPLICATION	Fully integrated with all the other package tools
	Optimized for footwear (SHOE LAST)
	Rapid Prototyping
	Reverse engineering

STUDIO 3D PAINT STYLE

Solution to design and
grading the 3D model
of a shoe LAST



**THIS IS AN IDEAL
TOOL FOR QUICK
DESIGN AND
CONCEPT
APPROVAL;**

*USING A PEN OR A MOUSE,
THE DESIGNER CAN EASILY DRAFT AN IDEA
DIRECTLY OVER THE LAST OR SKETCHING
WITH PHOTO-SHOP AND SEE THE RESULT
ON THE 3D LAST;*

STUDIO 3D SHOE DESIGN

On the competitive world of shoe makers, any second count!



PRESENTATIONS

- ▶ Quick render using a large library of texture and custom texture;
- ▶ High quality render add-on tools to create static images;
- ▶ High quality render add-on tools to create animations;
- ▶ High quality render add-on tools to create dynamic 360° pictures;



TECHNOLOGY

- ▶ Fully parametric CAD system that allows you to easily edit any curve design and in few seconds update the 3D model;
- ▶ High quality geometry using solid and surface modelling good for milling details;
- ▶ Precise curve creation on the 3D last and unfolded geometry (Offset curves, regular patterns shapes, etc.);
- ▶ Fully compatible with all CAD/CAM systems (Export / Import: DXF, DWG, IGES, STEP, PARASOLID, STL, OBJ, etc.);



SKETCHING

- ▶ Easy to draw with a complete set of wireframe tools;
- ▶ Free style draw or accurate design using parametric dimensions;
- ▶ Smart tools to trim, extend and break lines on the intersections;
- ▶ Complete set of tools to move, rotate, copy and mirror geometry;
- ▶ 2D library of symbols and patterns;

A unique package to covers every all aspects of the shoe-making process, from concept idea, passing thru a 3D design for manufacturing and prototyping, including grading tools and realist images and animations.

With a set of tools to create a complete design optimized for manufacturing, includes a complete set of tools to develop the uppers and shoe soles, with the most advanced solid and surface technology.



PRODUCTIVE TOOLS

- Smooth Shoe LAST geometry;
- Sharp edge detection and creation on Shoe LAST;
- Curve smooth and refit;
- Automatic curve length adjustment;



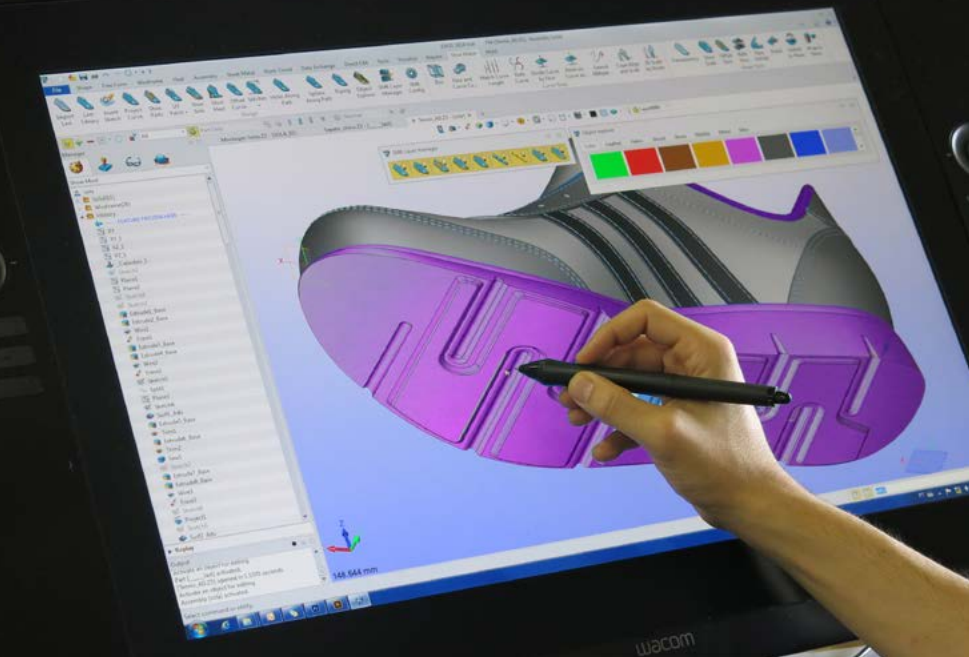
GRADING

- Automatic grading tool in 2D and 3D using international scale systems: English; French; Metric; Custom tables;



3D MODELLING

- Tools to design the upper component shapes with thickness and material textures;
- Advanced tools to unfold and wrap 3D shapes, very useful to create complex geometries Ex: beads, laces, etc.;
- Special features to create different types of stitches, Eyelets and pipes;
- Complete library of Laces combinations with customized sections and endings;
- Wizard to create Shoe Heel and Shoe Soles in few clicks, and fully editable;
- Morph tools to give artistic touch to your design or for small adjustments;
- Flex feature tools useful to raise up your design;
- A complete and customizable colour, texture and accessories library;
- A powerful tool to create 2D and 3D patterns;



POWERFUL FEATURES TO DESIGN A COMPLETE 3D SHOE FOR PRODUCTION IN THE SAME PROGRAMMA ENVIRONMENT

PERFECT SOLUTION TO DEFINE UPPER COMPONENT SHAPES WITH THICKNESS AND TEXTURE MATERIALS;

A UNIQUE SET OF TOOL ALLOWS YOU TO WRAP AND UN-WRAP 3D SOLIDS TO CREATE AN INFINITE NUMBER OF COMPLEX 3D GEOMETRIES SUCH AS BEADS;

TOOLS WIZARD TO EASY CREATE 3D SOLE FOR VISUAL EFFECT;

WITH AN OPTIONAL TOOL, USER CAN CREATE HIGH QUALITY RENDER IMAGES TO GIVE A REALISTIC APPEARANCE TO THE MODEL;

STUDIO SHOE SOLE DESIGN

Raise up the design level of the Shoe Soles and Heels!

Advanced tools to create complex Shoe Soles and Heel for production, combining solids and surfaces;

Now you can quickly create complex Soles and Heels, previously only possible with a lot of time-consuming.

With an unparalleled modelling technology, this product has no limit for your geometry creation.



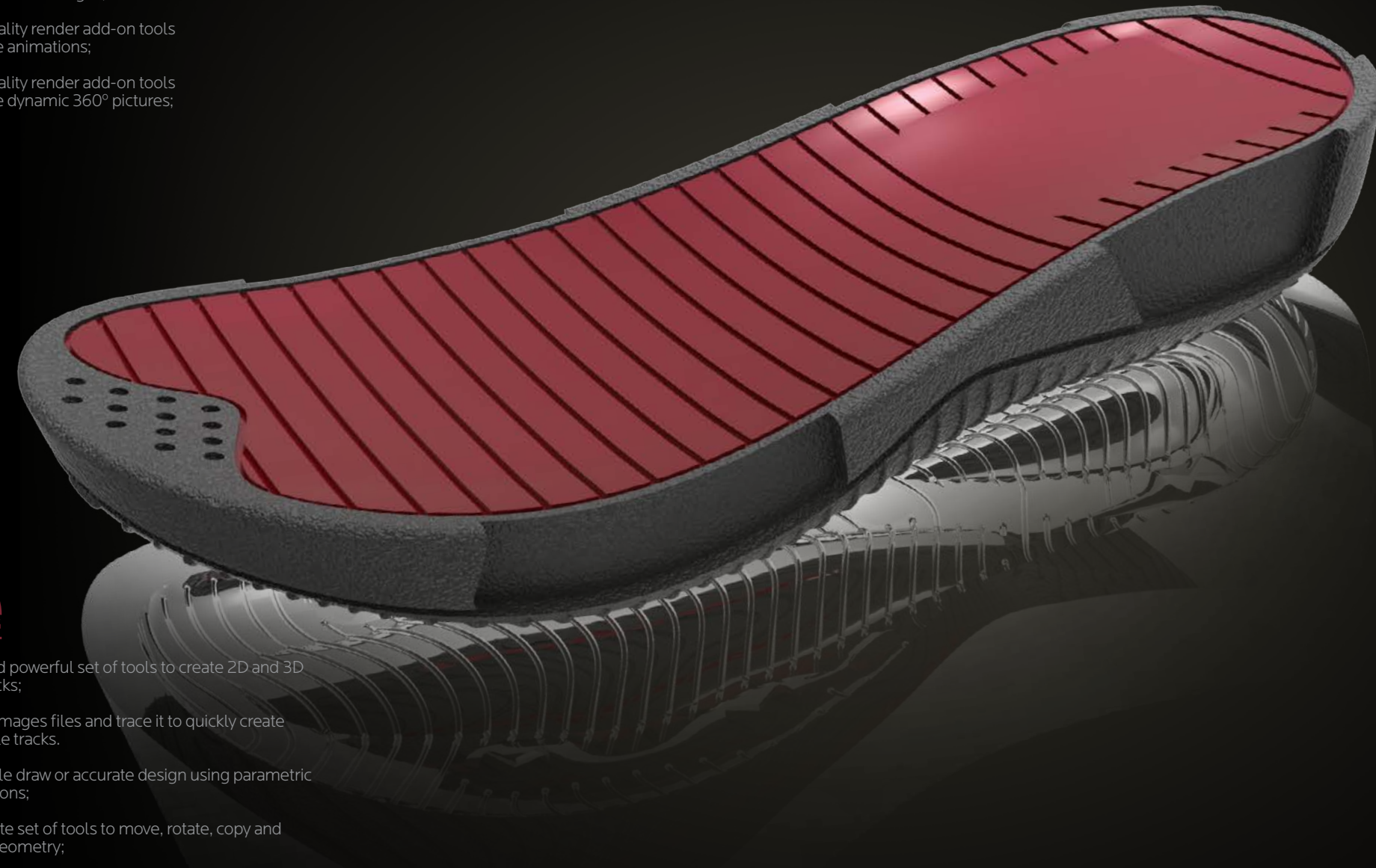
PRESENTATIONS

- ▶ Quick render using a large library of texture and custom texture;
- ▶ High quality render add-on tools to create static images;
- ▶ High quality render add-on tools to create animations;
- ▶ High quality render add-on tools to create dynamic 360° pictures;



SKETCHING

- ▶ Easy and powerful set of tools to create 2D and 3D sole tracks;
- ▶ Import images files and trace it to quickly create your Sole tracks.
- ▶ Free style draw or accurate design using parametric dimensions;
- ▶ Complete set of tools to move, rotate, copy and mirror geometry;
- ▶ 2D library for decoration and grading numbers;



GRADING

- ▶ Automatic grading tool in 2D and 3D using international scale systems: English; French; Metric; Custom tables;



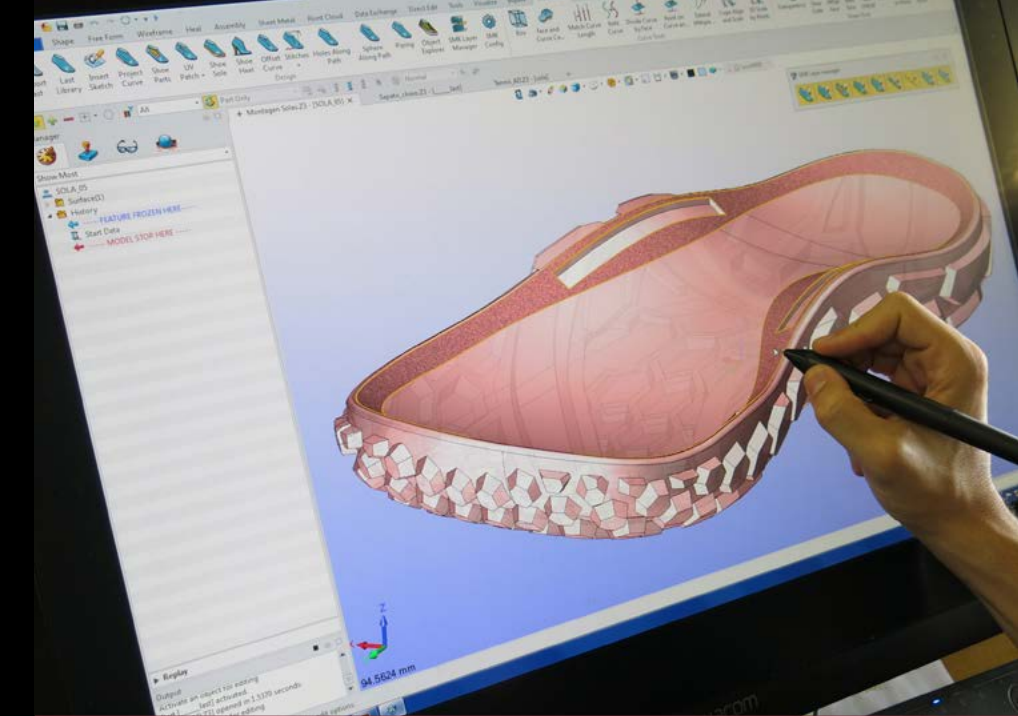
TECHNOLOGY

- ▶ High quality geometry using solid and surface modelling, good for milling details;
- ▶ Fully parametric 3D CAD system with all the features needed to create complex 3D models;
- ▶ Powerful tools that allow to create sole tracks as flatten and then wrap it on the shoe sole.
- ▶ Fully compatible with all CAD/CAM systems (Export / Import: IGES, STEP, PARASOLID, STL, OBJ, etc.)



3D MODELLING

- ▶ Wizard to create the base for the Shoe Heel and Shoe Soles;
- ▶ Special features to create standard types of shoe sole tracks; Advanced variable radios, chamfer
- ▶ Automatic shoe sole ribs creations (Standard and custom parametric ribs library) Advanced tools to unfold and wrap 3D shapes, useful to create complex geometries
- ▶ Powerful tools that allow you to create sole tracks as flatten and then wrap it on the shoe sole.
- ▶ A powerful tool to create 3D patterns, with scale, rotation and fit control;



POWERFUL FEATURES TO DESIGN A COMPLETE 3D SHOE FOR PRODUCTION IN THE SAME PROGRAMMA ENVIRONMENT

ADVANCED TOOLS TO CREATE COMPLEX SHOE SOLES FOR PRODUCTION, COMBINING SOLIDS AND SURFACES;

POWERFUL SET OF FEATURES OPTIMIZED FOR A QUICK SOLE AND HEEL CREATION;

SPECIAL FEATURES TO CREATE HIGHLY DETAILED AND COMPLEX SHOE TRACKS;

WRAP AND UNFOLD UNIQUE TECHNOLOGY;

STUDIO 3D TOOLS MAKER

It's your design? Make it real
Reduction your design time
and manufacturing costs.



- ▶ This module makes this product the most complete solution on the market for the shoe makers.
- ▶ From draft until the production, this is the unique product bundle that can handle the entire project in single software.
- ▶ This module allows you to create the moulds for all the accessories and soles needed.
- ▶ In an integrated environment the parametric powerful tools for solid and surface creation helps you to reduce your manufacturer time. Automatic mould tools simplify all the process of tool design an production.
- ▶ The tool includes technology for the following type of moulds:

PVC – Boots Moulds	TPR – Mould	PU – Mould
PVC – Air Blowing Mould	TPR – Double Mould	PU – Slippers Mould
PVC – Sandal Mould	TR/TPR Double Mould	EVA Mould
PVC – Air Slippers Mould	Rubber – Injection Mould	Accessories
PVC – Double D.I.P. Mould	Rubber – Injection Double Mould	Etc



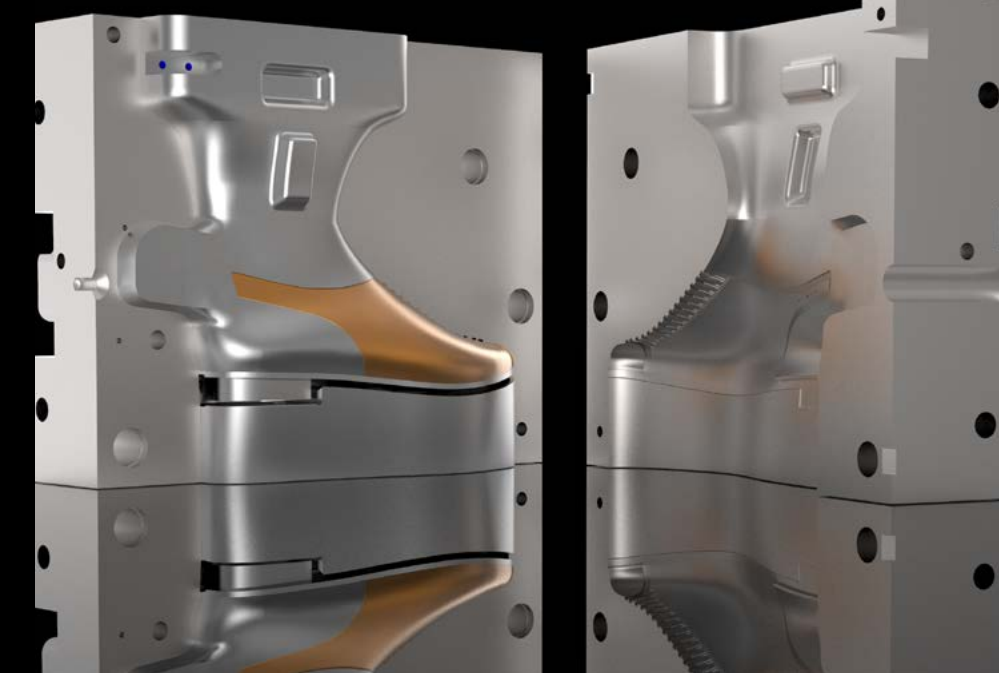
- High quality geometry using solid and surface modelling good for milling details;
- Fully parametric 3D CAD system with all the features needed to create complex 3D moulds;
- Powerful set of tools that allow you to create complete moulds for shoe sole and accessories.
- Fully compatible with all CAD/CAM systems (Export / Import: IGES, STEP, PARASOLID, STL, OBJ, etc.)



- Easy and powerful set of tools to create 2D and 3D sole tracks;
- Import images files and trace it to quickly create your Sole tracks.
- Free style draw or accurate design using parametric dimensions;
- Complete set of tools to move, rotate, copy and mirror geometry;
- 2D library for decoration and grading numbers;



- Mould and component library for a fast and complete project;
- Customize your own mould library;
- Special features to create mould core, cavity and inserts;



TOOLS MAKER

THIS MODULE MAKES PRODUCT THE MOST COMPLETE SOLUTION ON THE MARKET FOR SHOE MARKERS;

FROM DRAFT TO PRODUCTION, THIS TOO CAN HANDLE THE ENTIRE PROJECT IN SINGLE SOFTWARE;

ON THE SAME APPLICATION, IT'S NOW POSSIBLE TO CREATE THE MOULDS FOR ALL ACCESSORIES AND SOLES NEEDED

MOULDS AND STANDARD COMPONENTS LIBRARY

HIGH QUALITY GEOMETRY FOR MILLING (NURBS)

ADVANTAGES

- ▶ Easy to use
- ▶ High speed scanning
- ▶ High quality scanning
- ▶ 3D and colour scanning
- ▶ Custom scanning scripts
- ▶ Fully integrated with all the other package tools

TECHNOLOGY

- ▶ Optimized for footwear (SHOE LAST)
- ▶ Rapid Prototyping
- ▶ Reverse engineering

SPECIFICATIONS	
Scanning Method:	Digitalização 3D luz estruturada
Color 3D scanning :	Malha e textura de imagem
2 axis table :	C-eixo de rotação completa A-Axis -30 a 30 Tilt
Scanning volume:	Cilíndrico - Diâmetro 200 milímetros, 350 milímetros Altura
Accuracy:	0,03% sobre 100 cm
Calibration:	Automático
Scanning speed:	10 min para um Shoe Médio LAST (com 15° passos)
Supported OS :	Standard-PC (Windows XP, Vista, 7, 8-32 ou 64 bits)
Minimum computer requirements:	i5 ou i7 recomendado, 8GB de RAM, NVIDIA GeForce série 400 com 2 GB ou maior
Output formats:	OBJ

LARY LAST DESIGN

Solution to design and grading the 3D model of a shoe LAST!



SOLUTION TO DESIGN AND GRADING THE 3D MODEL OF A SHOE LAST;

SHOE LAST DESIGN IS AN OPTIMIZED SOLUTION TO SCAN AND CONVERT TO PARAMETRIC NURBS;

USING THE LATEST SCANNING TECHNOLOGY, YOU CAN CONVERT EXISTING PHYSICAL LAST TO DIGITAL FORMAT;

WITH A SET OF POWERFUL TOOLS YOU CAN, MOVE, ROTATE, EDIT, SMOOTH, GRADING THE SHOE LAST AND THEN CONVERT TO NURBS;

Lary®
INDUSTRIAL TECHNOLOGY

endereço/site???